

## Gabion Mesh Application – Coastal Protection

Gabion mesh is a kind of metal mesh composed of hexagonal mesh holes. Its hexagonal mesh structure gives it good rigidity and excellent stability. Besides, it also has good permeability and water permeability.

It used for coastal protection needs to be able to withstand seawater corrosion and wave impact. For this reason, gabion mesh is preferably made of zinc-aluminum alloy wire with PVC coating or stainless steel wire, and thicker wire diameter is adapted.

In coastal protection projects, gabion meshes are usually treated as cubic or rectangular gabion boxes. For smaller berms or embankments, we usually use gabion mattress structure.

## Specification

**Material:** Zinc-aluminum alloy wire + PVC coated, stainless steel 304 or 316

**Mesh Wire:** 2.7 mm, 3.0 mm, 3.4 mm, 4 mm

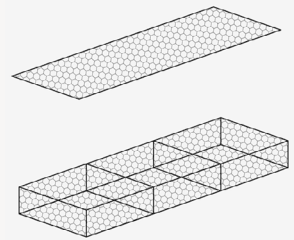
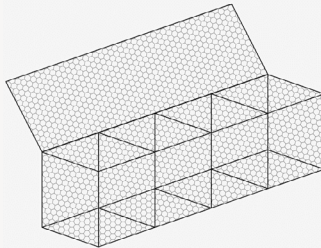
**Selvedge Wire Diameter:** 3.4 mm

**Mesh Size:** 80 × 100 mm, 100 × 120 mm

**Gabion Box Size:** 2 m × 1 m × 1 m, 1 m × 1 m × 1 m, 1 m × 1 m × 0.5 m, 0.5 m × 0.5 m × 0.5 m, etc.

**Gabion Mattress Size:** 6 m × 1 m × 0.3 m, 4 m × 1 m × 0.3 m, 4 m × 0.5 m × 0.3 m, etc.

**Standard:** Accord with ASTM A974, ASTM A641, ASTM A90, ASTM A185



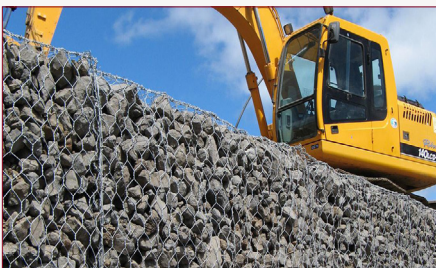
**Gabion Box**



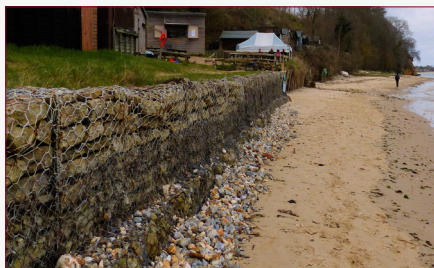
**Gabion Mattress**

## Application

Gabion mesh for coastal protection are mainly used to protect coastal areas and prevent coastal erosion. It also protects people and property on the beach.



**Laying gabion meshes for shoreline slope protection**



**Gabion meshes keep seaside houses safe from erosion threats.**



**Stronger coastal slopes with gabion meshes**