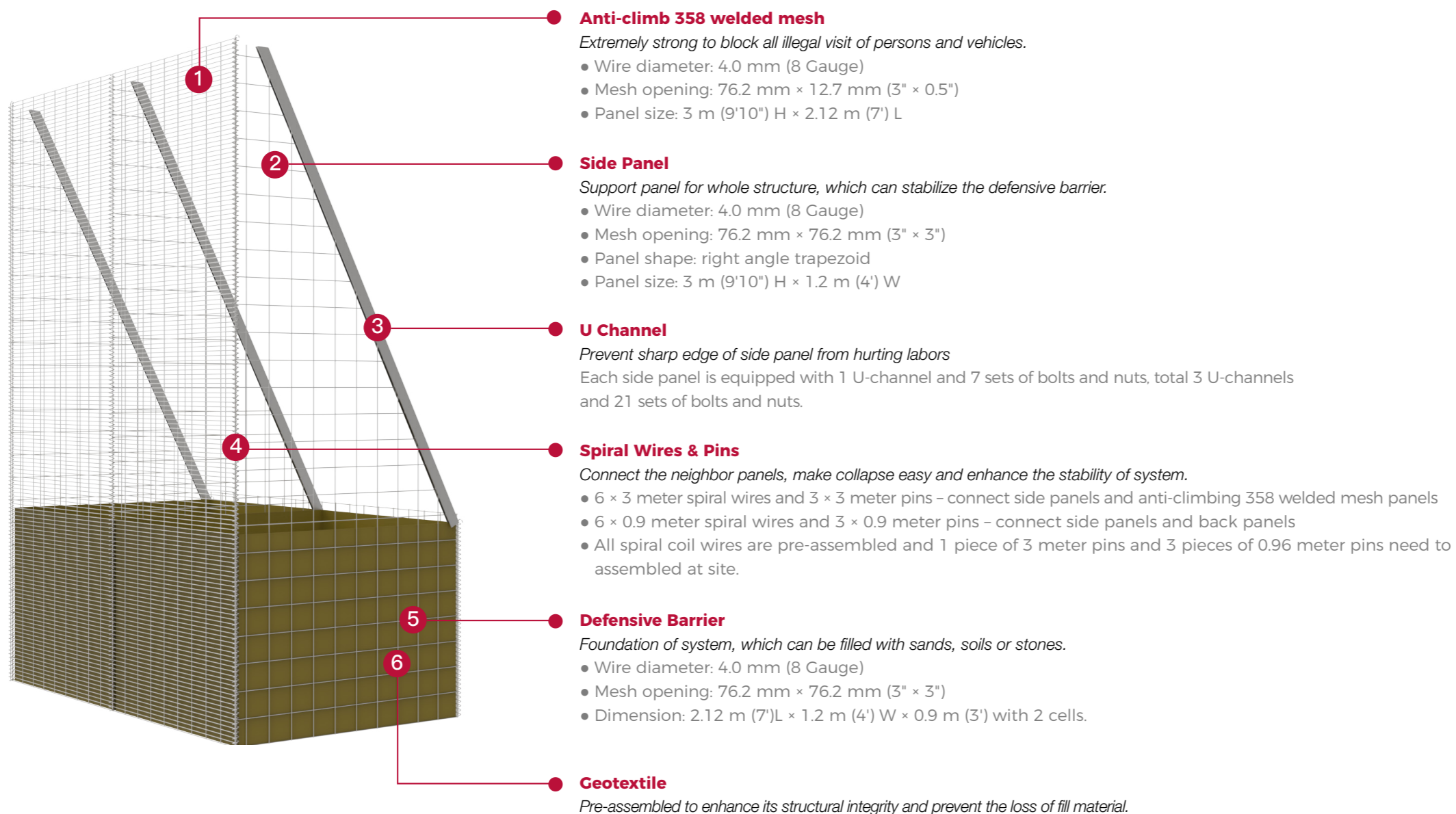


# Defensive Barrier Pro Blocks All Illegal Entrance

Defensive barrier pro combines 358 anti-climb welded mesh, defensive barrier and spiral wires and connection pins together to offer a superb strong perimeter for events, stadia and police requirements.

The whole structure allows rapid deployment, just pull up, stretch and connect, all works are completed. It need not special tools and ground mounted installation save much times for emergent application. You can build a short term defensive barrier within short time.

## Structures & Specifications



## Advantages & Benefits

### Extremely strong

The combination of anti-climbing 358 welded mesh and defensive barrier can block all illegal enters of both persons and vehicles.

### Ground mounted

It need not foundation or any site preparations. You can install it on the ground directly.

### Rapid deployment

It can be deployment within a moment. Just pull up and structure the structure and connect and stabilize them with connection pins, all works are completed. It need not special tools.

### Flexible

Defensive barrier and geotextile structure make the filling and empty materials easy and fast. It gives you flexibility to decide where and when to deploy the defensive barrier pro system.

### Safe

The sharp edge of trapezoid side panel are covered with steel U channels to protect the labor safe.

## Applications

Defensive barrier pro is an excellent crowd control security barrier, it provides a short term solution to stadia, event security and police requirements.

Furthermore, it is capable of safeguarding oil and gas facilities, essential infrastructure, and both urban and remote areas against the risks of explosions, ballistic attacks, and vehicular threats.

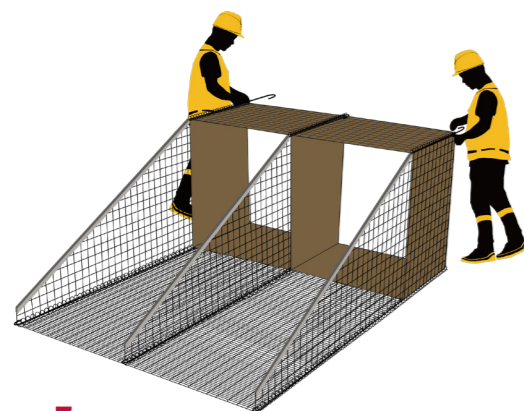
**Installation Guides**



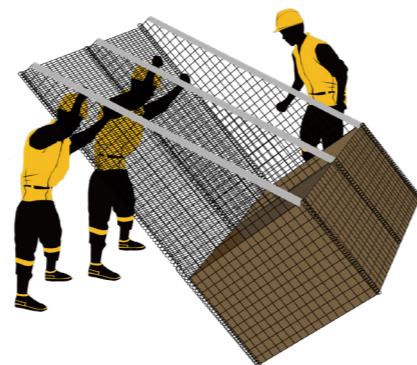
**Step 1**  
Pull out and stretch the defensive barrier pro structure



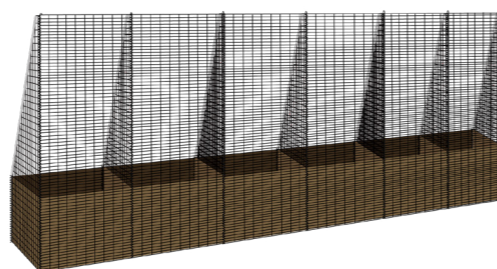
**Step 2**  
Connect side panel onto 358 welded mesh with pin



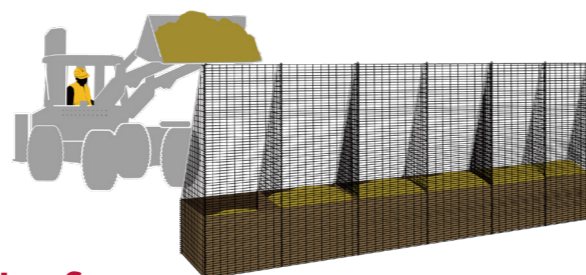
**Step 3**  
Connect back panel onto defensive barrier pro with pins



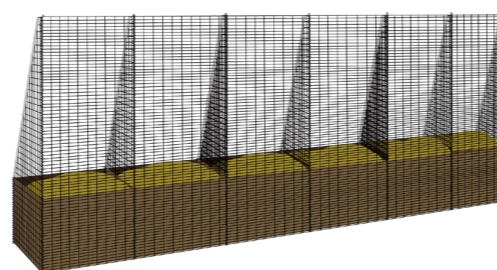
**Step 4**  
Erect the defensive barrier pro and the single unit installation is completed.



**Step 5**  
Repeat the above steps and connect the neighbour cells

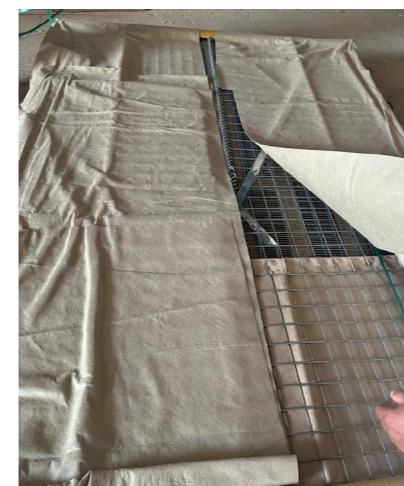


**Step 6**  
Fill the defensive barrier with forklift



**Step 7**  
All the projects are completed.

**Gallery**



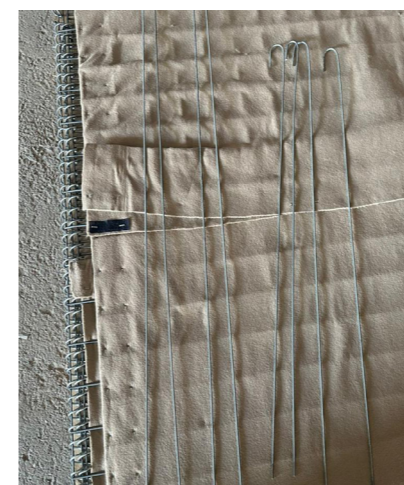
**Defensive barrier pro unit overview**



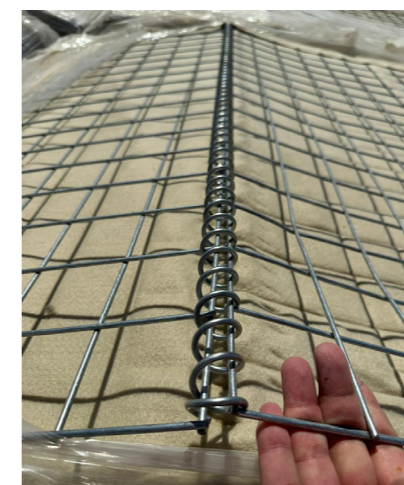
**Defensive barrier pro unit overview**



**Back panel**



**Connection pins**



**Spiral coil wire**



**Geotextile**



**Optional pallet package**